

Packaged EMI Filter with ESD Protection Diode

Features

- Low pass EMI filters with excellent attenuation at high frequencies
- ESD protection at 15KV per IEC61000
- Offered in 4,6 and 8 channel in small form-factor TDFN or UDFN package with 0.5mm pad pitch
- RoHS Compliant in Lead-Free Versions

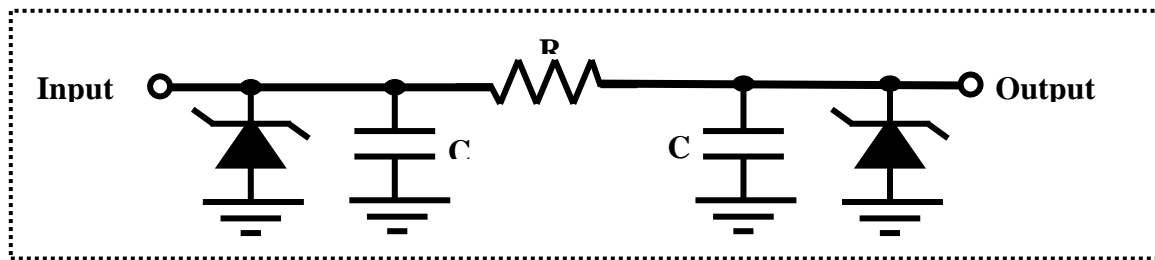
Applications

- Cellular Handsets
- PDA
- MP3 Players
- PC & Notebooks
- Smart Cards
- Digital Cameras

Product Description

The XEMF4850-xxxxR Array is a pi-style Capacitor-Resistor-Capacitor EMI/RFI Filter with integrated Diodes for electrostatic discharge (ESD) protection. Housed in miniature 8-pin TDFN Packages this product is available in 4 channel filters. This device has a cut-off frequency of 110MHz.

Schematic for Each Line



ELECTRICAL CHARACTERISTICS PER LINE @ 25°C Unless Otherwise Specified

PART NUMBER	RATED STAND-OFF VOLTAGE	MINIMUM BREAKDOWN VOLTAGE	MAXIMUM REVERSE LEAKAGE CURRENT	TYPICAL FORWARD VOLTAGE	MINIMUM ATTENUATION @ 800 to 3,000 MHz	CUT-OFF FREQUENCY 50-OHMS SOURCE & LOAD	RESISTANCE R +/-20%	CAPACITANCE C +/-20%
XEMF4850-xxxxR	6 Volts	7 Volts	0.1 uA	0.8 Volts	-25dB	110 MHz	100-ohms	12.5-pF

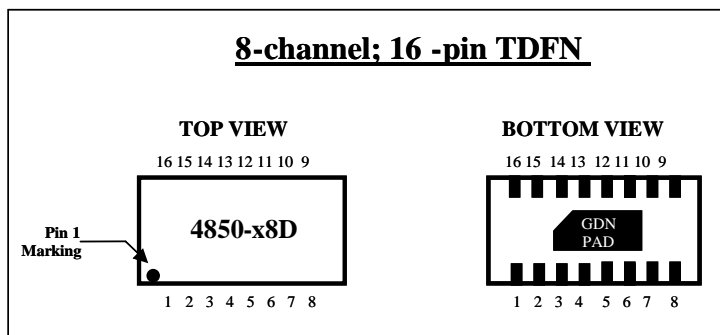
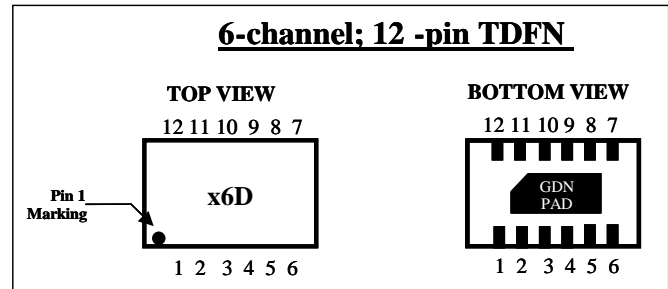
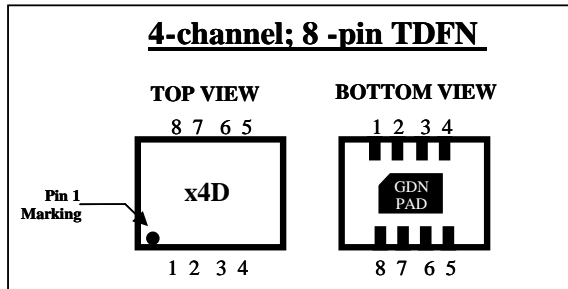
DEVICE CHARACTERISTICS

MAXIMUM RATINGS @ 25°C Unless Otherwise Specified

PARAMETER	VALUE	UNITS
Operating Temperature	-40°C to 85°C	°C
Storage Temperature	-55°C to 150°C	°C
Soldering Temperature for 10 seconds	265	°C

SiliconApps Part Number	XEMF4850-04D4R	XEMF4850-06D4R	XEMF4850-08D4R
Package Type	UDFN-8 (0.4mm)	UDFN-12 (0.4mm)	UDFN-16 (0.4mm)

Package Marking Examples:



Typical Insertion Loss vs. Frequency curve:

